

*Hospital*

*Outpatient  
Treatment*



## OXYGENATOR *Elastollan<sup>®</sup> TPU*

- Ensures blood is oxygenated as precisely as possible
- Exhibits almost no electrostatic charging that can create problems during use
- Allows the production of high precision thickness fibre walls of only 70  $\mu$



Next >





## SKIN STRETCHER *Ultraform<sup>®</sup> PRO POM*

- Reduces friction between functional parts, for ease of use during application
- Suitable for steam or ethylene oxide sterilization



[< Previous](#)

[Next >](#)



## CATHETERS & TUBINGS

### *Elastollan<sup>®</sup> TPU*

- High transparency allows monitoring of liquid content passing through
- Excellent chemical resistance, as well as resistance to tears and kinks help enhance lifetime of product



< Previous

Next >





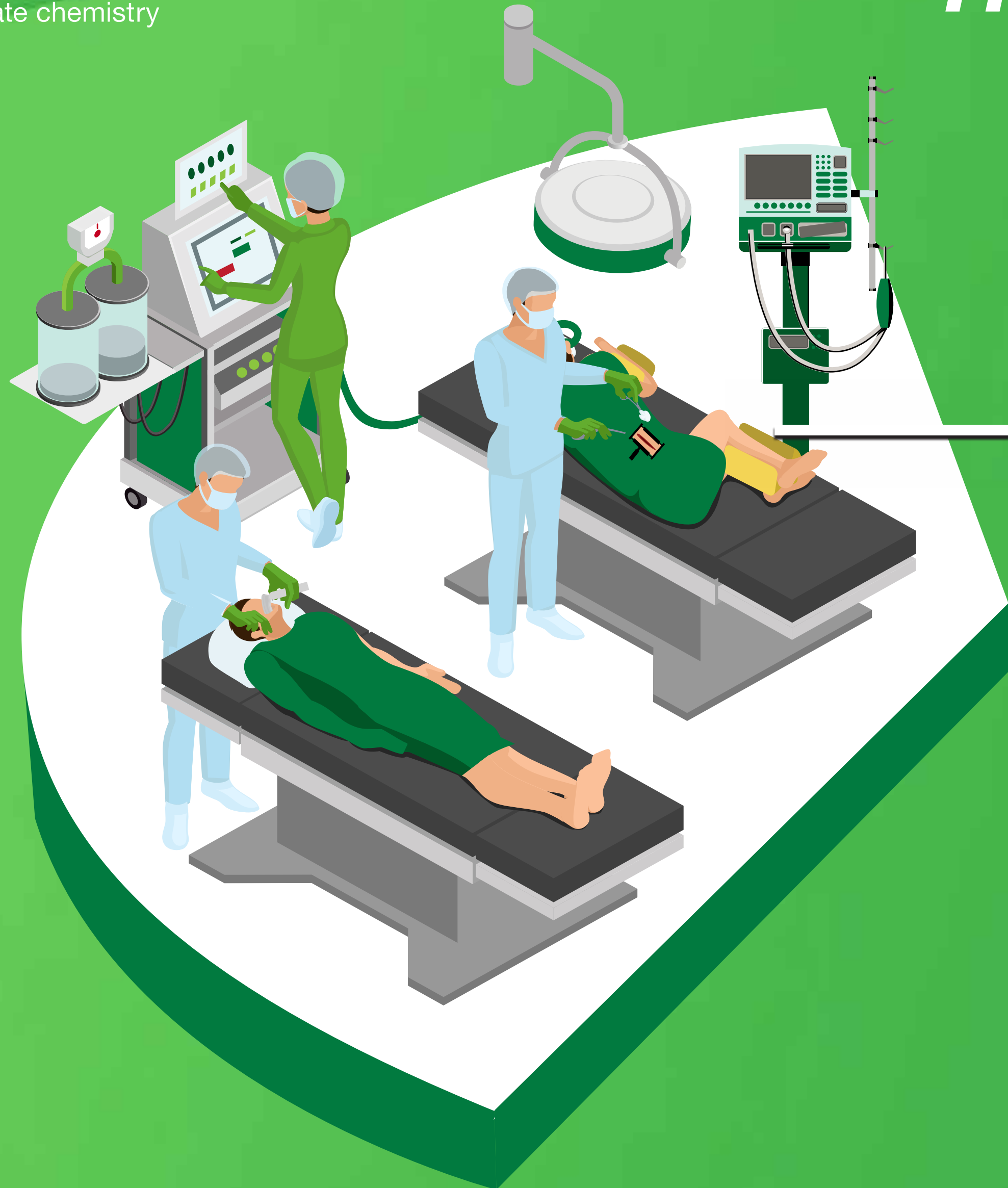
## LARYNGOSCOPE BLADE *Ultraform<sup>®</sup> PRO POM*

- High mechanical and tribological strength
- Provides stiffness and hardness
- Suitable for sterilization with superheated steam, plasma and ethylene oxide



[< Previous](#)

[Next >](#)



## POSITIONER PAD *Elasturan<sup>®</sup> PU*

- Excellent self-recovery property
- Compatible with PU and latex (skin layer)
- Provides soft-touch with good pressure distribution for pressure ulcer prevention
- Improves process and productivity by shortening curing time



< Previous

Next >



# Outpatient Treatment



## WHEELCHAIR

*TPU, E-TPU, PU, and engineering plastics*

- BASF's various polymeric product offerings enable **light weighting** in wheelchairs, which improves the **mobility** of the device
- **Greater comfort** to enhance user experience
- **Stylish design** can be achieved with more material processing options
- **Extension** of the wheelchair's usable life



< Previous

Next >



## DIALYSIS FILTER *Elastocast<sup>®</sup> PU*

Ensures the reliability of the filter by:

- Providing a reliable seal for hollow fiber filters
- Adhering well without distorting or tearing the fibers
- Optimum processability



< Previous

Next >





## STOOL DRAINAGE CATHETER *Elastollan<sup>®</sup> TPU*

- Material solution can be manufactured extremely thin and for complex shapes as it is highly flexible, yet possesses excellent tear resistance
- Able to produce improved drainage system that interacts with the body with almost neutral pressure



< Previous

Next >



## REDON DRAINAGE *Elastollan<sup>®</sup> TPU*

- Intrinsic material properties allows the drain to be connected directly to the guiding needle (without an adaptor)
- Elastollan<sup>®</sup> drains are **biocompatible**: the drain does not become ingrown in the tissue and is easy to remove



< Previous

Next >



# Outpatient Treatment



## 3-WAY STOPCOCK *Ultraform<sup>®</sup> PRO POM*

- Small precision parts can be produced with Ultraform<sup>®</sup>'s excellent **dimensional** and **low water absorption rate**
- Excellent friction properties allows production of sliding parts **without needing lubrication**
- Suitable for **steam or ethylene oxide sterilization**



< Previous

Next >

# Outpatient Treatment



## ORTHOPAEDIC LEG

*Elastollan<sup>®</sup> TPU*

*Ultramid<sup>®</sup> PA*

- BASF engineering plastics are **more robust, lightweight and flexible** than conventional materials
- Part strength remains **without weakening** from the **constant adjustments** of prosthetic limb



< Previous

Next >





## INSULIN PEN

*Ultraform<sup>®</sup> PRO POM*

*Ultradur<sup>®</sup> PRO PBT*

- Excellent sliding friction and mechanical properties of material enables
  - Dispensing accurate dosage
  - Lower noise produced during administration
- Low water absorbability, high resistance to many chemicals
- Suitable for ethylene oxide sterilization



< Previous

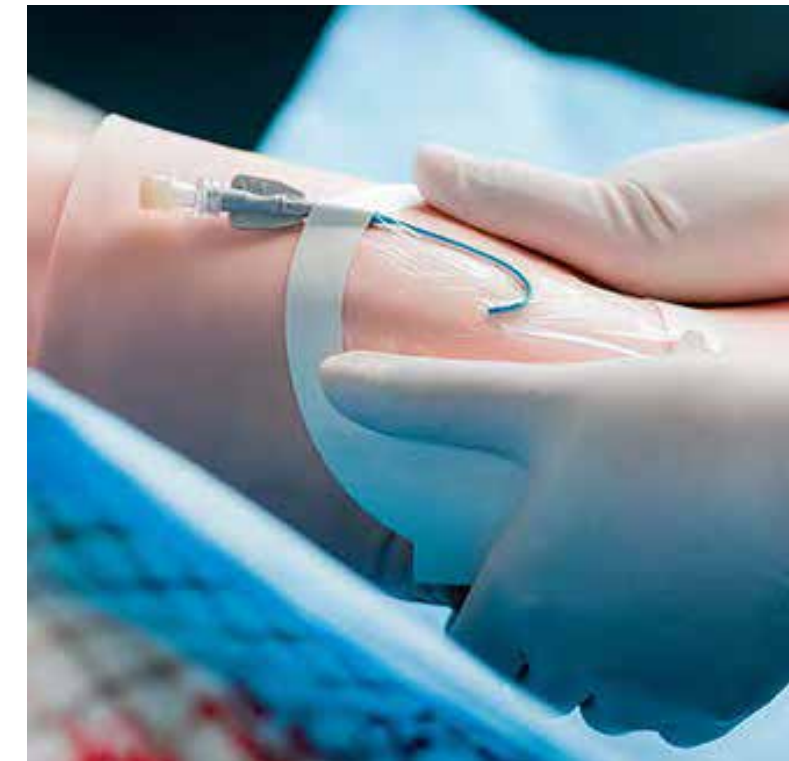
Next >



## WOUND DRESSING

*Elastollan<sup>®</sup> TPU*

- Waterproof to keep wounds dry to aid healing
- Highly breathable to enable wicking of moisture
- Allows thinner film production, improving patient's feel of dressing



[< Previous](#)

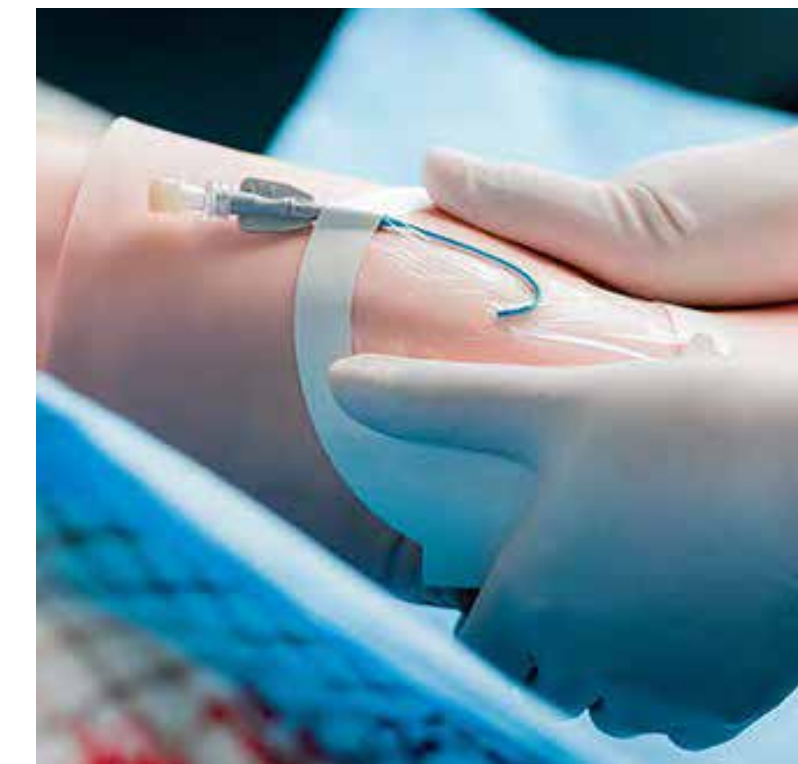
[Next >](#)



## WOUND CARE DRAIN TUBING

### *Elastollan<sup>®</sup> TPU*

- High transparency allows monitoring of liquid content passing through
- Excellent chemical resistance, as well as resistance to tears and kinks help enhance lifetime of product
- Sterilizable by ETO or Gamma



< Previous

Next >





## MEDICAL MATTRESS

*Elastollan<sup>®</sup> TPU*

- Better hydrolysis resistance (against sweat and urine). Hence will not absorb odours and is more durable
- Flexibility under wide temperature range makes it more durable to continuous strain of air pumping through the mattress to enhance circulation and prevent bedsores



< Previous

Next >



## BEDFRAMES & WHEELS

### *Elastollan<sup>®</sup> TPU*

- Wheels can have improved **abrasion resistance** of over conventional material

### *Ultramid<sup>®</sup> PA*

- Allows **lightweighting** for structural components and wheel hubs, improving control of the bed during movement



< Previous